



imageRUNNER ADVANCE DX 6700 Series

CONNECT SECURELY, TRANSFORM DIGITALLY

INNOVATIVE SCAN TECHNOLOGY AND SMART SOFTWARE WORK HAND-IN-HAND

The future of business is digital. Canon imageRUNNER ADVANCE DX is a new generation of smart multifunction devices, designed to support and accelerate every step of your digital transformation. Built with Canon's imageRUNNER ADVANCE DNA, state-of-the-art technology and software work hand-in-hand to digitise, automate and optimise content-centric workflows.

Canon's imageRUNNER ADVANCE DX 6700 series offers smart and secure A3 mono multifunction devices enabling dynamic, digitised workflows for fast, high-quality, document production without compromising on security. New scanning technology ensures high-speed and pinpoint accuracy, while uniFLOW Online Express - which comes as standard - delivers cloud connectivity and basic print management.



**CLOUD
CONNECTIVITY**



SECURITY  **McAfee
PROTECTED**



PRODUCTIVITY



SUSTAINABILITY



Canon uniFLOW Online
Outstanding Cloud Output Management Solution



New to the Line

Canon

imageRUNNER ADVANCE DX 6700 Series

CLOUD CONNECTIVITY

- Scan and print documents from any location with enhanced cloud connectivity, offered with re-usable print formats for ease of use
- Cloud-based software-as-standard uniFLOW Online Express offers a single integrated solution to enhance device security and simplify print management
- Canon's MEAP platform optimises processes by integrating with document capture and output management solutions and various applications such as uniFLOW Online*, AirPrint, Mopria, Google Cloud Print and Canon PRINT Business

SECURITY

- Ensure information confidentiality and security across the network with IPsec and firewall functionality
- Set up device authentication, two-factor authentication and device function restrictions for both device and cloud-based security measures
- Encrypted PDF scanning ensures document security during scanning process
- Upgrade to uniFLOW Online* for enhanced secure printing, mobile printing, and guest printing from any device
- Combination of Verify system at start up and McAfee Embedded Control Software ensures device functionality is never compromised from the tampering of firmware and applications, all in real-time.

PRODUCTIVITY

- Fast, high-quality scanning at 270 ipm (A4) with expansive connectivity options
- Automated scan, store and search workflows boost efficiency and reduce human error
- Device management tools such as iWMC provide centralised control over the device fleet and print management
- Automatic removal of blank pages when scanning minimises process times
- Reusable formats, automatic file names from barcode data, Office format conversions, cloud and device OCR with IRIS enable easy handling and fast document processing

SUSTAINABILITY

- Edit print settings at device-level for accurate scan output
- Quiet operation and reduced paper hitting sounds during scanning is enabled thanks to technologies such as digital registration and a smooth ADF internal structure
- Automated and digitised processes minimise paper usage for a paperless office
- Reduce waste with high-quality scanning, including digital deskewing and advanced stain-resistant glass

*uniFLOW Online is available as a Device Based Cloud Subscription for Document Output and Capture Management. Based on business needs, users can upgrade to uniFLOW Online to unlock a range of advanced benefits, including: Increased security with user authentication methods. Personalised workflows to enhance productivity. Reduced wastage by releasing jobs at the device. An intuitive cloud dashboard to leverage real-time data. Greater control over access and usage to reduce print costs.

QUICK FACTS

- **Format:** Mono A3
- **Paper Supply Capacity (Max):** 7,700 sheets
- **Warm-up time:** 4 seconds or less
- **Finishing Capabilities:** Collate, Group, Offset, Staple, Saddle Stitch, Hole Punch, Eco Staple, Staple On Demand, Document Insertion, Z-fold, C-fold
- **Supported File Types:** PDF, EPS, TIFF, JPEG, and XPS
- **Optional:** EFI Fiery embedded
- **Print speed:** 55 – 80 ppm (A4)
- **Scan Speed:** 270 ipm (A4)
- **Print Languages:** UFRII, PCL6, Adobe® PostScript 3™ (optional)
- **Print Resolution:** 1,200 x 1,200
- Enhanced cloud connectivity enables collaborative document access from anywhere with re-usable formats for easy handling
- Accurate, high-speed scanning is facilitated by Canon's innovative new paper feeding mechanism and stain-resistant glass
- Efficient workflow automation means documents are intuitively scanned, searched and stored with applications including OneDrive, SharePoint, Concur and Dropbox
- McAfee Embedded Control software alongside with other security features offer complete peace of mind and a 360° protection covering: document, network and device
- Simplified print management is enabled with centrally-managed print settings and device usage analysis, provided through native uniFLOW Online Express.
- Quiet ADF operation, low energy consumption and reduced emissions lower environmental impacts

TAILORED SOLUTIONS TO MEET EVERY CHALLENGE

CORE

Perform routine office operations safely and with ease, with minimum hardware, embedded software including UFOE and services offering complete device maintenance and support.



HARDWARE



SERVICES



SOFTWARE

ENHANCED

Boost performance with enhancements such as finishing options and security add-ons e.g. Data Removal Service. Choose solutions to expand cloud capabilities with uniFLOW Online including advanced scanning directly with your Google account.

BESPOKE

Choose tailored solutions for any business need by removing print management burdens. Consult with Canon experts to manage your extensive requirements, with bespoke solutions and Managed Services options.

Canon Ireland

3006 Lake Drive
Citywest, Saggart
Co. Dublin, Ireland
Telephone No: 01 2052400
Facsimile No: 01 2052525
canon.ie

Canon (UK) Ltd

5 The Square
Stockley Park
Uxbridge
UB11 1ET
Tel: 01895 648 000
www.canon.co.uk

Canon Inc.
canon.com

Canon Europe
canon-europe.com

English edition
© Canon Europa N.V., 2020

imageRUNNER ADVANCE DX 6700 Series

IMPROVE BUSINESS EFFICIENCY WITH MONO A3 MULTIFUNCTION DEVICES THAT STREAMLINE WORKFLOWS WITH AUTOMATION AND CLOUD CONNECTIVITY

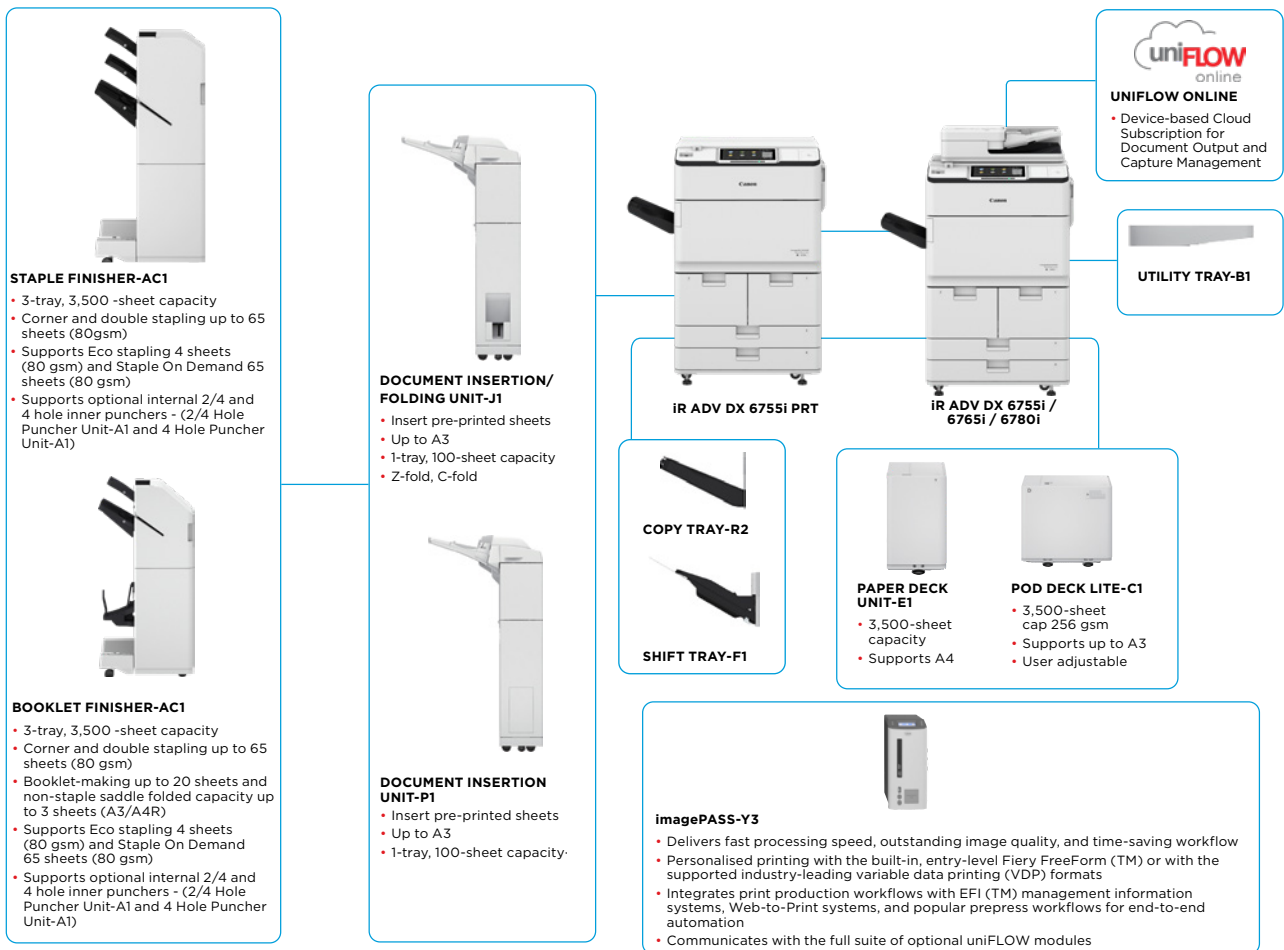
MAIN CONFIGURATION OPTIONS



Canon uniFLOW Online
Outstanding Cloud Output/Management Solution



New to the Line



This flat configuration is for illustration purpose only. For a complete list of options and the exact compatibility relationships, please refer to the online [product configurator](#).

The Unified Firmware Platform (UFP) ensures that the latest feature upgrades and protection are available, for an enhanced user experience across the entire iR ADVANCE DX portfolio.



TECHNICAL SPECIFICATIONS

imageRUNNER ADVANCE DX 6700 Series

MAIN UNIT

Machine type	A3 Monochrome Laser Multifunctional
Core functions	Print, Copy*, Scan*, Send*, Store and Optional Fax* *Not available on iR-ADV DX 6755i Printer model
Processor	1.75GHz Dual Core Processor
Control Panel	Standard: 10.1" TFT LCD WSVGA Colour Touch panel Optional: 10.4" TFT LCD SVGA Colour Upright Touch panel for MFP Model
Memory	Standard: 3.0GB RAM
Hard Disk drive	Standard*: 320GB (available disk space: 250GB), Optional: 250GB, 1TB *A different initial HDD may be used.
Mirroring Hard Disk Drive	Optional
Interface Connection	Network Standard: 1000Base-T/100Base-TX/10Base-T, Wireless LAN (IEEE 802.11 b/g/n) Optional: NFC, Bluetooth Low Energy Others Standard: USB 2.0 (Host) x1, USB 3.0 (Host) x1, USB 2.0 (Device) x1; Optional: Serial Interface, Copy Control Interface

Paper Supply Capacity (A4, 80gsm)

	Standard: 4 200 sheets 100-sheet Multi-purpose tray x1 550-sheet cassette x 2 1,500-sheet Paper Deck x 2 Maximum: 7,700 sheets (with Paper Deck Unit-E1 or POD Deck Lite-C1)
--	---

Paper output capacity (A4, 80gsm)

	250 Sheets (with Copy Tray-R2) Maximum: 3,500 Sheets (with Staple Finisher-AC1 or Booklet Finisher-AC1)
--	---

Finishing capabilities

	With options: Collate, Group, Offset, Staple, Saddle Stitch, Hole Punch, Eco Staple, Staple On Demand, Document Insertion, Z-fold, C-fold
--	---

Supported media types

	Multi-purpose tray: Thin, Plain, Recycled, Color, Heavy, Bond, Transparency, Label, Pre-punched, Letterhead, Tab, Tracing Paper Decks (Right/Left): Thin, Plain, Recycled, Color, Heavy, Bond, Pre-punched, Letterhead Paper Cassettes (Upper/Lower): Thin, Plain, Recycled, Color, Heavy, Bond, Pre-punched, Letterhead, Tab* *Tab Feeding Attachment-B1 is required.
--	---

Supported media sizes

	Multi-purpose tray: Standard size: A3, A4, A4R, A5 ⁺ , A5R, A6R ⁺ , B4, B5, B5R Custom size: 100.0 x 148.0 mm to 297.0 x 487.7 mm Free size: 100.0 x 148.0 mm to 297.0 x 487.7 mm *1 Supported media weights: more than 64 gsm *2 Supported media weights: more than 91 gsm
--	--

Supported media weights

	Paper Decks (Right/Left): Standard size: A4, B5 Paper Cassettes (Upper/Lower): Standard size: A3, A4, A4R, A5R, B4, B5, B5R Custom size: 139.7 x 182.0 mm to 297 x 487.7 mm Multi-purpose tray: 52 to 256 gsm Paper Deck(Right/Left): 52 to 220 gsm Paper Cassette(Upper/Lower): 52 to 220 gsm Duplex: 52 to 220 gsm
--	--

Warm-up Time

	Quick Start-up Mode: 4 Seconds or less* *Time from device power on to when the copy icon appears and is enabled to operate on the touch panel display From Sleep Mode: 30 Seconds or Less From Power On: 30 seconds or less* *Time from device power-on, until copy ready(not print reservation)
--	--

Dimensions (W x D x H)

	iR-ADV DX 6780i/6765i/6755i (MFP model): 670 x 770 x 1,185 mm *With optional Upright Control Panel: 1,170 x 770 x 1,252 mm iR-ADV DX 6755i Printer model: 670 x 770 x 1,075 mm
--	---

Installation Space(W x D)

	Basic: 1,533 x 1,353 mm (with Multi-purpose tray/ upper-right cover open + Front cover open + Copy Tray) Fully configured: 2,436 x 1,353 mm (with POD Deck Lite-C1 + Document Insertion/Folding Unit-J1 + Booklet Finisher-AC1/Staple Finisher-AC1 + Main unit Front cover open)
--	---

Weight

	iR-ADV DX 6780i/6765i/6755i: Approx. 219 kg ¹ , Approx. 223 kg ² iR-ADV DX 6755i PRT: Approx. 199kg ³ ¹ Including ADF, Flat Touch Panel and the toner bottle. ² Including ADF, optional Upright touch panel and the toner bottle. ³ Including Flat panel, printer cover and the toner bottle.
--	--

PRINT SPECIFICATIONS

Print Speed	Including the toner bottle. iR-ADV DX 6780i: Up to 80 ppm (A4), up to 40 ppm (A3), up to 58 ppm (A4R), up to 35ppm (A5R) iR-ADV DX 6765i: Up to 65 ppm (A4), up to 32 ppm (A3), up to 47 ppm (A4R), up to 35 ppm (A5R) iR-ADV DX 6755i/6755i PRT: Up to 55 ppm (A4), up to 32 ppm (A3), up to 40 ppm (A4R), up to 35 ppm (A5R) 1,200 x 1,200
Print Resolution (dpi)	1,200 x 1,200
Page description languages	Standard: UFR II, PCL6, Optional: Adobe® PostScript® 3™
Direct Print	Supported file types: PDF, EPS, TIFF/JPEG, and XPS

Printing from mobile and cloud

	AirPrint, Mopria and Google Cloud Print, Canon PRINT Business, uniFLOW Online A range of software and MEAP-based solutions are available to provide printing from mobile devices or internet-connected devices and cloud-based services depending on your requirements. Please contact your sales representative for further information
--	---

Fonts

	PS fonts: 136 Roman PCL fonts: 93 Roman, 10 Bitmap fonts, 2 OCR fonts, Andalé Mono WT J/K/S/T ¹ (Japanese, Korean, Simplified and Traditional Chinese), Barcode fonts ²
--	--

Print Features

	Secured Print, Secure Watermark, Header/Footer, Page Layout, Two-sided Printing, Mixed Paper Sizes/Orientations, Front/Back Covers, Toner Reduction, Poster Printing, Forced hold printing, Print Date, Scheduled Printing, Printing Using a Virtual Printer
--	--

Operating System

	UFR II: Windows® 7/8.1/10/Server 2008/Server 2008 R2/Server 2012/Server 2012 R2/Server 2016/Server 2019, MAC OS X (10.10 or later) PCL: Windows® 7/8.1/10/Server 2008/Server 2008 R2/Server 2012/Server 2012 R2/Server 2016/Server 2019 PS: Windows® 7/ 8.1/10/Server 2008/Server 2008 R2/Server 2012/Server 2012 R2/Server 2016/Server 2019, MAC OS X (10.10 or later) PPD: Windows® 7/8.1/10, MAC OS X (10.9 or later) McAfee Embedded Control Software As of July, 2019.
--	--

COPY SPECIFICATIONS

Copy Speed	iR-ADV DX 6780i: Up to 80 ppm (A4), up to 40 ppm (A3), up to 58 ppm (A4R), up to 35ppm (A5R) iR-ADV DX 6765i: Up to 65 ppm (A4), up to 32 ppm (A3), up to 47 ppm (A4R), up to 35 ppm (A5R) iR-ADV DX 6755i/6755i PRT: Up to 55 ppm (A4), up to 32 ppm (A3), up to 40 ppm (A4R), up to 35 ppm (A5R)
First-Copy-Out Time (A4)	iR-ADV DX 6780i: Approx. 3.1 seconds or less iR-ADV DX 6765i: Approx. 3.3 seconds or less iR-ADV DX 6755i/6755i PRT: Approx. 3.3 seconds or less

Copy resolution (dpi)

	600x 600 Up to 9,999 copies Automatic or Manual (9 Levels) Variable zoom: 25% to 400% (1% Increments) Preset reduction/enlargement: 25%, 50%, 70%, 100%(1:1), 141%, 200%, 400%
--	--

Copy Features

	Preset R/E Ratios by Area, Two-Sided, Density Adjustment, Original Type Selection, Interrupt Mode, Book to Two Pages, Two-sided Original, Job Build, N on 1, Add Cover, Insert Sheets, Different Size Originals, Page Numbering, Copy Set Numbering, Sharpness, Erase Frame, Secure Watermark, Print Date, Gutter, Print & Check, Negative/Positive, Repeat Images, Merge Job Blocks, Mirror Image, Store in Mail Box, Superimpose Image, Copy ID Card, Skip Blank Pages, Free Size Original, Reserved copy, Copy Sample
--	--

SCAN SPECIFICATIONS

Type	Single-pass Duplexing Automatic Document Feeder [2-sided to 2-sided (Automatic)] *Detect Feeder Multi Sheet Feed is supported.
Document Feeder Paper Capacity (80 gsm)	up to 200 Sheets
Acceptable Originals and weights	Platen: Sheet, Book, and 3-Dimensional Objects Document Feeder media weight: 1-sided scanning: 38 to 220 gsm 2-sided scanning: 38 to 220 gsm *An acceptable weights of A6R or smaller is 50 to 220gsm.
Supported media sizes	Platen max. scanning size: up to 297.0 x 431.8 mm Document Feeder media size: A3, A4, A4R, A5, A5R, A6R, B4, B5, B5R, B6R, Custom size: 70.0 x 139.7 mm to 304.8 x 431.8 mm

Scan Speed (ipm, BW/CL, A4)

	1-sided Scanning: 135/135 (300 x 300 dpi, send), 80/80 (600 x 600 dpi, copy) 2-sided Scanning: 270/270 (300 x 300 dpi, send), 160/90 (600 x 600 dpi, copy)
--	---

Scan Resolution (dpi)

	Scan for Copy: 600 x 600 Scan for Send: (Push) 600 x 600 (SMB/FTP/WebDAV/IFAX), (Pull) 600 x 600 Scan for Fax: 600 x 600
--	--

Pull Scan Specifications

	Colour Network ScanGear2. For both TWAIN and WIA Supported OS: Windows® 7/8.1/10/Server 2008/Server 2008 R2/Server 2012/Server 2012 R2/Server 2016
--	---

Scan Method

	Push Scan, Pull Scan, Scan to Box, Scan to Advanced Space, Scan to Network, Scan to USB Memory Key, Scan to Mobile device, Scan to cloud (uniFLOW - Online)
--	---

SEND SPECIFICATIONS

Destination	Standard: E-mail/Internet FAX (SMTP), SMB3.0, FTP, WebDAV, Mail Box Optional: Super G3 FAX, IP Fax
Address Book	LDAP (2000)/Local (1600)/Speed dial (200)
Send resolution (dpi)	Push: up to 600 x 600 Pull: up to 600 x 600



TECHNICAL SPECIFICATIONS

imageRUNNER ADVANCE DX 6700 Series

Communication protocol	File: FTP(TCP/IP), SMB3.0 (TCP/IP), WebDAV E-mail/Fax: SMTP, POP3	ENVIRONMENTAL SPECIFICATIONS	
File Format	Standard: TIFF, JPEG, PDF(Compact, Searchable, Apply policy, Optimize for Web, PDF/A-1b, Trace & Smooth, Encrypted, Device Signature, User Signature), XPS(Compact, Searchable, Device Signature, User Signature), Office Open XML (PowerPoint, Word)	Operating Environment	Temperature: 10 to 30°C Humidity: 20 to 80 % RH (Relative Humidity)
Universal Send Features	Original Type Selection, Two-sided Original, Book to Two Pages, Different-size Originals, Density Adjustment, Sharpness, Copy Ratio, Erase Frame, Job Build, Delayed Send, Preview, Job Done Notice, File Name, Subject/Message, Reply-to, E-mail Priority, TX Report, Original Content Orientation, Skip Blank Pages	Power Source	220-240V, 50/60Hz, 10A
FAX SPECIFICATIONS		Power consumption	Maximum: Approx. 2,400 W Copying (with DADF continuous scan): Approx. 1,290 W ¹ Standby: Approx. 256 W ¹ Sleep mode: Approx. 0.9 W ²
Maximum Number of Connection Lines	2	Typical Electricity Consumption (TEC)*	iR-ADV DX 6780i: 1.61 kWh *As per USA Energy Star 3.0
Modem Speed	Super G3: 33.6 kbps G3: 14.4 kbps	Noise levels	Sound Power Level (LWA,m) Active (1-sided) iR-ADV DX 6780i: 7.3 B, Kv 0.3 B iR-ADV DX 6765i: 7.2 B, Kv 0.3 B iR-ADV DX 6755i/6755i PRT: 7.2 B, Kv 0.3 B *Reference value: measured only one unit with ISO7779, described with ISO9296 (2017)
Compression Method	MH, MR, MMR, JBIG	Sound Pressure (LpAm) Bystander's position: Active (1-sided): iR-ADV DX 6780i: 59 dB* iR-ADV DX 6765i: 58 dB* iR-ADV DX 6755i: 57 dB* iR-ADV DX 6755i PRT: 58 dB* Standby: 37 dB* *Reference value: measured only one unit with ISO7779, described with ISO9296 (2017)	
Resolution (dpi)	400x400 (Ultra Fine), 200x400 (Super Fine), 200x200 (Fine), 200x100 (Normal)	CONSUMABLES	
Sending/Receiving Size	Sending: A3, A4, A4R, A5 ¹ , A5R ¹ , B4, B5 ² , B5R ¹ Receiving: A3, A4, A4R, A5R, B4, B5, B5R ¹ Sent as A4 ² Sent as B4 short	Toner Cartridge	C-EXV 36 Black Toner
FAX memory	Up to 30,000 pages (2,000 jobs)	Toner (Estimated Yield @6% Coverage)	56,000 pages
Speed dials	Max. 200	SOFTWARE AND PRINTER MANAGEMENT	
Group dials/destinations	Max. 199 dials	Tracking and reporting	For detailed information please visit our website https://www.canon-europe.com/business/
Sequential broadcast	Max. 256 addresses	Remote management tools	Universal Login Manager (ULM) uniFLOW Online Express* *For more information, please refer to uniFLOW Online Express/uniFLOW Online Technical Datasheets
Memory backup	Yes	Scanning software	iW Management Console
Fax Features	Sender's Name (TTI), Selecting the Telephone Line (when sending fax), Direct Send, Delayed Send, Preview, Job Done Notice, TX Report, Interrupt Transmission, Sequential Broadcasting, Password/Subaddress Sending, Confidential Mailbox, 2 on 1 Log	Optimisation tools	eMaintenance Content Delivery System
STORE SPECIFICATIONS		Platform	Network ScanGear
Mail Box (Number supported)	100 User Inboxes, 1 Memory RX Inbox, 50 Confidential Fax Inboxes Maximum 30,000 Pages (2,000 jobs) Stored	Document Administration	Canon Driver Configuration Tool NetSpot Device Installer
Advanced Space	Communication Protocol: SMB or WebDAV SUPPORTED CLIENT PC: WINDOWS* 8/1/10 CONCURRENT CONNECTIONS (MAX.): SMB:64, WEBDAV:3	FIREY PRINT CONTROLLER SPECIFICATIONS	MEAP (Multifunctional Embedded Application Platform)
Advanced Space available disc space	Standard:16 GB (With option: max. 480GB.)	Optional/Standard	Kofax Power PDF (Optional)
Advanced Space Features	Authentication for Advanced Space Log-in, Sort Function, Printing a PDF File with a Password, imageWARE Secure Audit Manager Support, Search, File Preview, Authentication Management, Open to public, URI TX, Backup/Restore	Name	
SECURITY SPECIFICATIONS		Print Resolution (dpi)	Optional on all models Canon imagePASS-Y3 V1.1 (Server)
Authentication and Access Control	User Authentication (Picture Login, Picture and PIN Login, Card Login, Username and Password Login, Function Level Login, Mobile Login), Department ID Authentication (Department ID and PIN Login, Function Level Login), uniFLOW Online Express (PIN Login, Picture Login, Picture and PIN Login, Card Login, Card and PIN Login, Username and Password Login, Department ID and PIN Login, Function Level Login), Access Management System (Access Control)	Page Description Language(s)	1200 x 1200, 600 x 600
Document Security	Print Security (Secure Print, Encrypted Secure Print, Forced Hold Printing, uniFLOW Secure Print*), Receive Data Security (Confidential Fax Inbox Forwarding Received Documents Automatically), Scan Security (Encrypted PDF, Device Signature PDF/XPS, User Signature PDF/XPS, Adobe LiveCycle® Rights Management ES2.5 Integration), BOX Security (Mail Box Password Protected, Advanced Space Access Control), Send Data Security (Setting for requesting password input per transmission, Restricted E-mail/File send functions, Confirming FAX number, Allow/Restrict Fax Driver Transmissions, Allow/Restrict Sending from History, S/MIME Support), Document Tracking (Secure Watermark) ¹ Requires uniFLOW Online / uniFLOW	Memory	PCL6, Adobe PostScript 3
Network Security	TLS 1.3, IPsec, IEEE802.1X authentication, SNMP V3.0, Firewall Functionality (IP/MAC Address Filtering), Dual Network Support (Wired LAN/Wireless LAN, Wired LAN/Wired LAN), Disabling Unused Functions (Enabling/Disabling Protocols/Applications, Enabling/Disabling Remote UI, Enabling/Disabling USB Interface), Communication Line Separation (G3 FAX, USB Port, Advanced Space, Scan and Send -Virus Concerns for E-mail Reception)	Hard Disk Drive	8GB (2 x4GB)
Device Security	Protecting HDD Data (HDD Data Encryption (FIPS140-2 Validated), HDD Data Overwrite Erase, HDD Lock), Standard HDD Initialize, Trusted Platform Module (TPM), Job Log Conceal Function, Protecting MFD Software Integrity, Checking MFD Software Integrity (Verify System at Startup, Runtime Intrusion Detection), Comply IEEE2600.2 (Common Criteria Certification) (TBD)	Processor Speed	500 GB SATA
Device Management and Auditing	Administrator Password, Digital Certificate And Key Management, Audit Log, Cooperating with External Security Audit System (Security Information and Event Management), Image Data Logging, Security Policy Setting	System	Intel Pentium G4400 (3.3GHz)
		Fonts	FS350 Pro
		Supported Operating Systems	PS: 138 Fonts PCL: 113 Fonts
		Interface	Windows 7 64 bit/Windows 8.1 64 bit/Windows 10 64 bit/Windows Server 2008 R2 64bit only/Windows Server 2012 64bit only (Only Printer driver support)/Windows Server 2012 R2 64bit only/Windows Server 2016 R2 64 bit only, MAC OS (10.11, 10.12, 10.13, 10.14)
		Network protocols	2 x Ethernet (1000Base-T/100Base-TX/10Base-T), USB 3.0 x 2 (rear), x 3 (front on Fiery Quick Touch TM), USB 2.0 x 4 (rear)
		Direct Print VDP	TCP/IP (FTP, SMTP, POP, HTTP, SNMP, LDAP, SLP, SMB, LPD, IPP, WS-Discovery, Bonjour, Direct Mobile Printing, Port9100, S/NTP, 802.1X, DHCP, DNS, NTP)
		Fiery Print Controller Standard Features	PDF1.7, EPS, TIFF6, JDF1.4/JMF (Optional)
		Fiery Print Controller Options	FreeForm v1, v2.1, PPML, PDF/VT-1, PDF/VT-2, Creo VPS
		HW Platform	Fiery Command WorkStation/Paper Catalog, Fiery Remote Scan/Fiery Hot Folders & Virtual Printers/ Fiery JDF
		BASE OS	Fiery Impose/Fiery Compose/Fiery Impose and Compose/ Removable HDD kit/ Fiery Image Viewer
		Power source	NX One
		Maximum Power consumption	Windows 10 IoT Enterprise 2019 LTSC
		DIMENSIONS (W X D X H)	AC100-240V, 50Hz/60Hz, 3.0A (100V) - 1.5A (240V)
		Weight	53 W
			203 x 248 x 384 mm Server unit only: Approx. 5.9kg



TECHNICAL SPECIFICATIONS

imageRUNNER ADVANCE DX 6700 Series

PAPER SUPPLY OPTIONS

Paper Deck Unit-E1

Paper Capacity: 3,500 sheets (80 gsm)
 Paper Type: Thin, Plain, Recycled, Color, Heavy, Bond, Pre-punched, Letterhead
 Paper Size: A4, B5
 Paper Weight: 52 to 256 gsm
 Power Source: from the Main Unit
 Dimensions (W x D x H): 340 x 630 x 572 mm (attached to the main unit)
 Weight: Approx. 34 kg

POD Deck Lite-C1

Paper Capacity: 3,500 sheets (80 gsm)
 Paper Type: Thin, Plain, Recycled, Color, Heavy, Tracing, Bond, Transparency, Label, Pre-punched, Letterhead, Tab
 Paper Size: A3, A4, A4R, B4, A5R, B5, B5R, Custom size: 139.7 x 182.0 mm to 297.0 to 487.7 mm
 Paper Weight: 52 to 256 gsm
 Power Source: 220-240V, 50/60Hz, 1.2A
 Dimensions (W x D x H): 633 x 686 x 574 mm (attached to the main unit)
 Weight: Approx. 68 kg

OUTPUT OPTIONS*

Copy Tray-R2

*Paper capacity may vary with different of paper type/size.
 Provides a simple tray for basic output needs.
 Capacity: 250/100 sheets (1-sided/2-sided, 80 gsm)
 Dimensions (W x D x H): 420 x 382 x 175 mm

Staple Finisher-AC1

Tray Capacity (with 80gsm paper):
 Upper Tray: A4, A5, A5R, A6R, B5: 250 sheets
 A3, A4R, B4, B5R: 125 sheets
 Mid Tray: Same as upper tray
 Lower Tray: A4, A5, A5R, B5: 3,000 sheets
 A3, A4R, B4, B5R: 1,500 sheets
 A6R: 250 sheets
 Paper Weight: 52 to 256 gsm
 Staple Position: Corner, Double
 Staple Capacity:
 A4, B5: 65 sheets (52 to 90 gsm)
 A3, A4R, B4: 40 sheets (52 to 90 gsm)
 Eco Staple: A3, A4
 5 sheets (52 to 64 gsm)
 4 sheets (65 to 81.4 gsm)
 3 sheets (82 to 105 gsm)
 Staple On Demand: 65 sheets
 Power supply: From the main unit
 Dimensions (W x D x H): 656 x 623 x 1,195 mm (when the extension tray and rotary tray are extended)
 Weight: Approx. 36 kg

Booklet Finisher-AC1

(Includes the above Staple Finisher-AC1 basic staple specifications.)
 Saddle Stitch paper size: A3, A4R, B4, Custom Size (195.0 x 270.0 mm to 297.0 x 431.8 mm)
 Saddle Stitch Staple Capacity: 20 sheets x 10 sets (52 to 81.4 gsm) (including 1 cover sheet up to 256 gsm)
 Non Staple Folded Bunch Capacity: 3 sheets (52 to 105 gsm)
 Power supply: From the main unit
 Dimensions (W x D x H): 656 x 623 x 1,195 mm (when the extension tray and rotary tray are extended)
 Weight: Approx. 60 kg

2/4 HOLE PUNCHER UNIT-A1

(Requires either the Staple Finisher-AC1 or Booklet Finisher-AC1)
 Two or Four Holes
 Acceptable Punch Paper Weight: 52 to 256 gsm
 Acceptable Punch Paper Size:
 Two holes A3, A4, A4R, A5, B4, B5, B5R
 Four holes A3, A4
 Power Source: From the finisher

4 Hole Puncher Unit-A1

(Requires either the Staple Finisher-AC1 or Booklet Finisher-AC1)
 Four Holes
 Acceptable Punch Paper Weight: 52 to 256 gsm
 Acceptable Punch Paper Size:
 Four holes A3, A4, A4R, A5, B4, B5, B5R
 Power Source: From the finisher

Document Insertion Unit-P1

(Requires either the Staple Finisher-AC1 or Booklet Finisher-AC1)
 Number of trays: 1
 Tray Capacity: 100 Sheets (with 80 gsm paper)
 Acceptable Paper Type: Thin, Plain, Recycled, Color, Heavy, Coated, Bond, Letterhead, Tab
 Acceptable Paper Sizes: A3, A4, A4R, B4, B5, B5R
 Acceptable Paper Weight: 60 to 256 gsm
 Power Source: 100-240V, 50/60Hz, 1.0A
 Dimensions (W x D x H): 247 x 679 x 1,242 mm (attached to the device: width excluding document tray)
 Weight: Approx. 40 kg

Document Insertion / Folding Unit-J1

(Requires either the Staple Finisher-AC1 or Booklet Finisher-AC1)
 Number of trays: 1
 Supported Folding Type: Z-Fold, C-Fold
 Acceptable Paper Type:
 Insertion Unit: Thin, Plain, Recycled, Color, Heavy, Coated, Bond, Letterhead, Tab
 Z-Fold/C-Fold: Thin, Plain, Recycled, Color
 Acceptable Paper Sizes:
 Insertion Unit: A3, A4, A4R, B4, B5, B5R
 Z-Fold: A3, A4R, B4
 C-Fold: A4R
 Acceptable Paper Weight:
 Insertion Unit: 60 to 256 gsm
 Z-Fold/C-Fold: 60 to 105 gsm
 Output Capacity (with 80 gsm paper):
 Insertion: 100 Sheets
 Z-Fold*: A3, B4: 30 sheets (80 gsm)
 A4R: 10 sheets
 C-fold: A4R: 40 sheets (80 gsm)
 *Z-Fold output to the Staple Finisher-AC1 or Booklet Finisher-AC1
 Power Source: 100-240V, 50/60Hz, 1.0A
 Dimensions (W x D x H): 247 x 679 x 1,242 mm (attached to the device: width excluding document tray)
 Weight: Approx. 76 kg

HARDWARE ACCESSORIES

Card Readers

Various card readers available e.g. MiCard Plus.
 Please contact local Canon Office for more details.
 Copy Card Reader-F1
 Copy Card Reader Attachment-A4

Others

Upright Control Panel-J1
 Utility Tray-B1
 Tab Feeding Attachment Kit-B1
 Shift Tray-F1
 Numeric Keypad-A1
 Finisher Jogger Kit-A1

SECURITY OPTIONS

Data security

2.5inch/250GB HDD-N1
 2.5inch/1TB HDD-P1
 HDD Mirroring Kit-J1

SYSTEM AND CONTROLLER OPTIONS

Print Accessories

PCL International Font Set-A1
 PS Printer Kit-BC1

Barcode Printing

Barcode Printing Kit-D1

Efi-Fiery Based Controller

imagePASS-Y3 V1.1

Efi-Fiery Based Controller Options

Fiery Impose
 Fiery Compose
 Fiery Impose and Compose
 Fiery ImageViewer
 Removable HDD Kit-B6

System Accessories

Serial Interface Kit-K3
 NFC Kit-E1
 Copy Control Interface Kit-A1
 Connection Kit-A2 for Bluetooth LE

Fax Accessories

Super G3 FAX Board-AS1
 Super G3 2nd Line Fax Board-AS1
 Remote Fax Kit-A1
 IP FAX Expansion Kit-B1

OTHER OPTIONS

Accessibility Accessories

ADF Access Handle-A1
 Voice Guidance Kit-G1
 Voice Operation Kit-D1

Staple Cartridge

Staple Cartridge-X1
 Staple Cartridge-Y1

Software & Solutions



Certifications and compatibility



Canon Ireland
 3006 Lake Drive
 Citywest, Saggart
 Co. Dublin, Ireland
 Telephone No: 01 2052400
 Facsimile No: 01 2052525
 canon.ie

Canon (UK) Ltd
 5 The Square
 Stockley Park
 Uxbridge
 UB11 1ET
 Tel: 01895 648 000
 www.canon.co.uk

Canon Inc.
 canon.com
 Canon Europe
 canon-europe.com
 English edition
 © Canon Europa N.V., 2020

